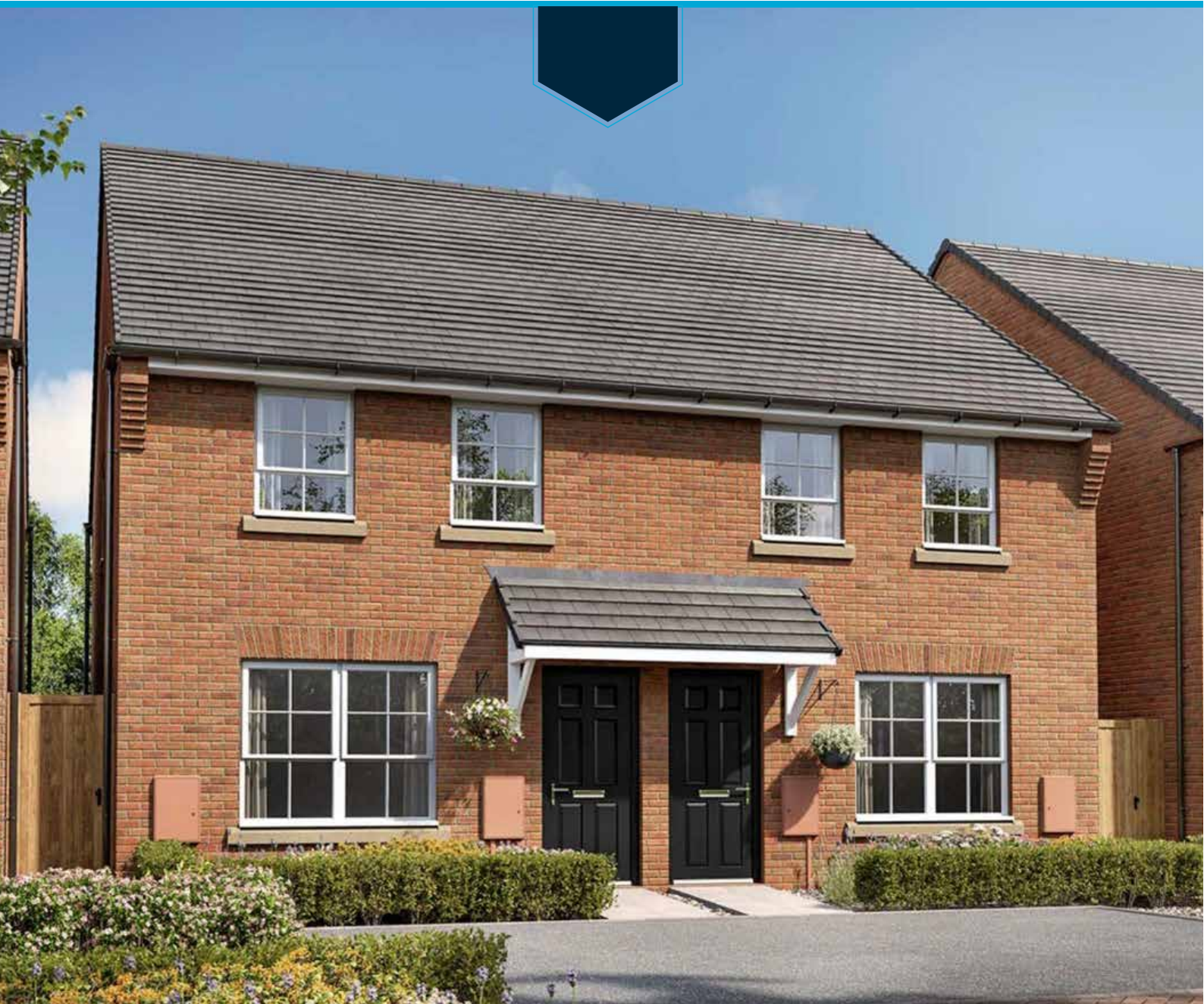


DEVELOPMENTS  
BY



---

# CENTURION VILLAGE





# CENTURION VILLAGE

Discover Centurion Village, a collection of beautiful three and four-bedroom homes nestled in the picturesque South Ribble countryside, including twenty-five three-bedroom homes available through Shared Ownership.

Our award-winning team are on a mission to create opportunities and change lives as we strive to build a better future with this new development, all built to the highest of standards.



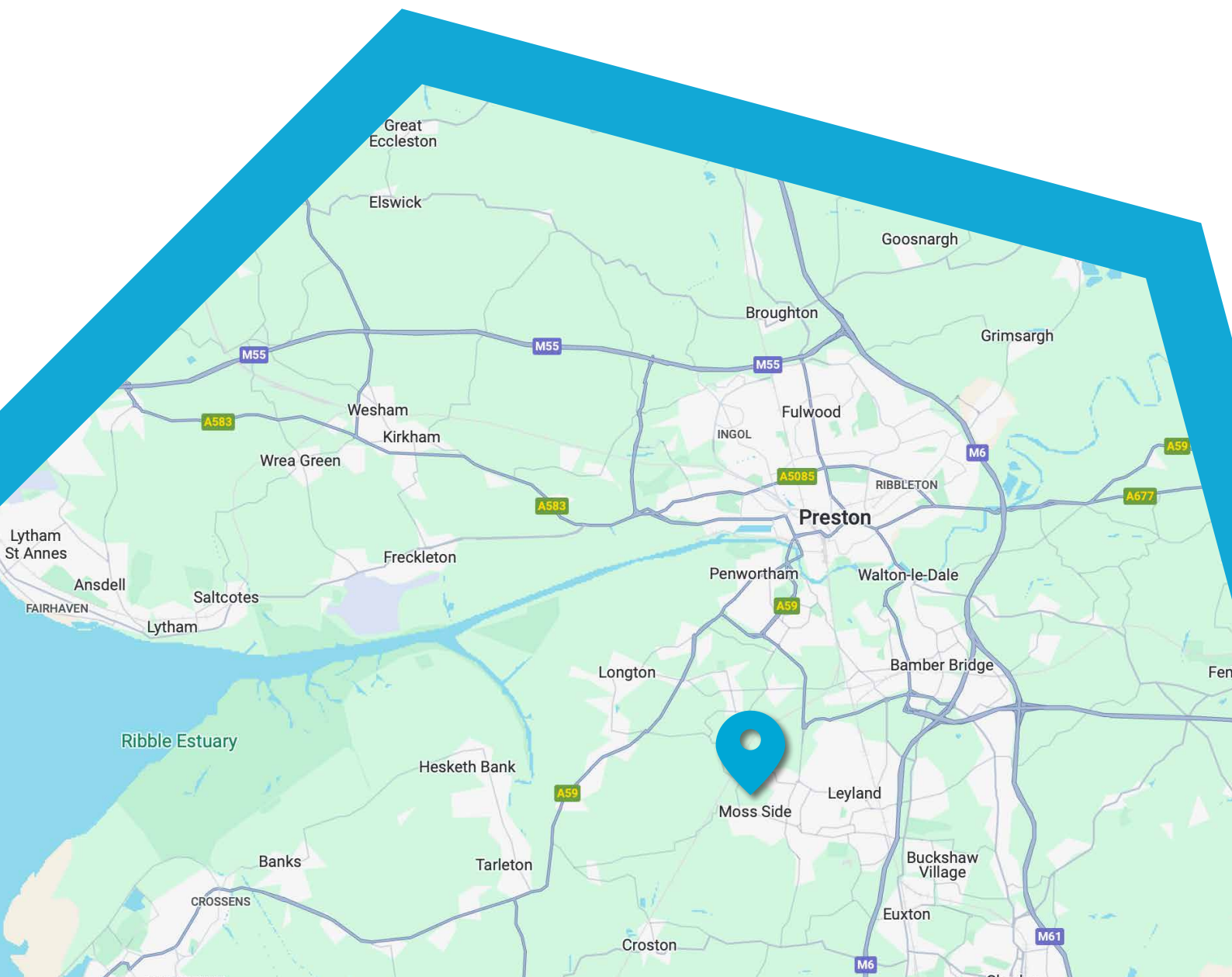
# CENTURION VILLAGE

## THE AREA

Longmeanygate, Midge Hall,  
Leyland, PR26 7TB

Enjoy the charm of rural Lancashire living, with excellent schools and scenic bridle paths connecting you to the local pub and farm shop, all right on your doorstep. For added convenience, Preston and Southport are less than 30 minutes away, and the M6 is just a 10-minute drive.

- Moss Side Medical Centre - 0.5 miles
- Moss Side Primary School - 1 mile
- Worden Park - 2 miles
- Leyland Train Station - Approximately 2 miles
- Balshaws High School - 2 miles
- Chorley and South Ribble Hospital - 5 miles



# WHY ONE VISION HOUSING?

## HOUSING SPECIALISTS

One Vision Housing is an award-winning housing provider with over 13,600 homes across the North West.

Operating as a not-for-profit organisation, we believe in providing good quality, affordable homes and help to create thriving and inclusive communities.

From the moment you choose your new OVH home, until you move in, we'll support you every step of the way to make the process as easy and enjoyable as possible.



# SHARED OWNERSHIP EXPLAINED

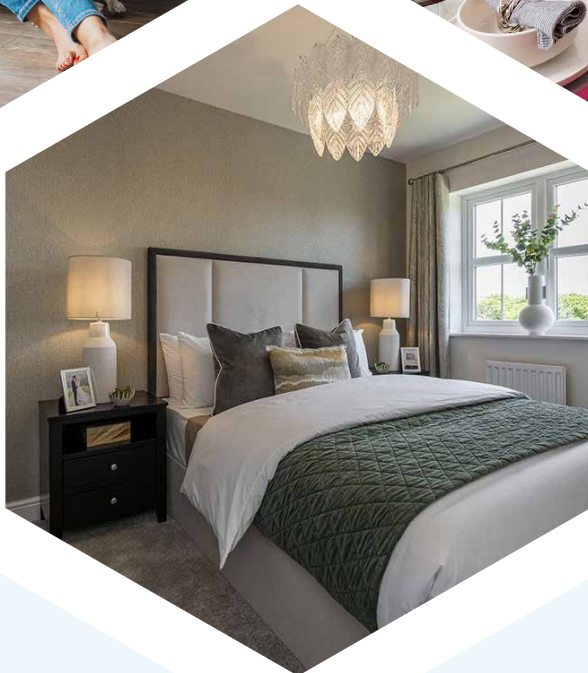
## What is Shared Ownership?

Shared Ownership is a scheme that will enable you to buy a share of your home – meaning a smaller mortgage and a reduced deposit.

Initially, shares will be available from 10% to 75% of the property value, depending on affordability.

After your first share purchase, you can then either gradually increase your shares over time (this is called staircasing) or purchase the remaining shares outright.

For more details on our Shared Ownership schemes, please visit [ovh.org.uk/buy](https://ovh.org.uk/buy)





## **THE WADE** THREE BEDROOM HOUSE

### About the house

The Wade is a handsome double fronted property with a central hallway which enjoys a turned staircase rising to the first floor and WC. A spacious living room occupies one side of the property whilst a modern kitchen/diner, with access to the garden, occupies the other.

With windows to the three elevations, the first floor offers lots of natural light and includes three well proportioned bedrooms, all of which are complimented by a modern main bathroom.

### Features

- Kitchen with dining area
- French door to rear garden
- Windows to three elevations
- 3 well-proportioned bedrooms
- Off road parking

# THE WADE FLOOR PLAN



## Room sizes

Living Room: 4.78m x 3.30m  
 Kitchen/Diner: 4.78m x 3.69m

Bedroom 1: 4.78m x 3.40m  
 Bedroom 2: 3.69m x 2.68m  
 Bedroom 3: 2.00m x 3.14m  
 Bathroom: 2.00m x 2.18m

Tenure

Plots

Shared Ownership

111, 195



## **THE TURPIN** THREE BEDROOM HOUSE

### About the house

The Turpin, an impressive three-bedroom home, is perfect for modern family living. The ground floor boasts a comfortable lounge and a stylish kitchen/dining room, complete with a useful utility/rear porch area and WC.

Upstairs, you'll find two double bedrooms, a single bedroom ideal for use as a home office, and a family bathroom.

### Features

- 3 bedroom home
- Kitchen/diner
- Spacious family lounge
- 2 double bedrooms
- Third bedroom or handy home office
- Main bedroom



# THE TURPIN FLOOR PLAN



## Room sizes

Living Room: 4.64m x 4.47m  
 Kitchen/Diner: 4.71m x 3.02m

Bedroom 1: 4.64m x 3.04m  
 Bedroom 2: 4.15m x 2.37m  
 Bedroom 3: 3.03m x 2.21m  
 Bathroom: 1.91m x 2.00m


Tenure

Plots

Shared Ownership

112, 113, 117, 118, 119, 147, 148, 149, 150, 183, 184, 185, 186, 187, 188,  
 189, 190, 191, 192, 193, 194, 198, 199

*Customers should note that all plans and images are for illustrative purposes only. All dimensions indicated are approximate and any furniture layout is for illustrative purposes also. Homes may be 'handed' (mirror image) versions of the illustrations, and may be detached, semi-detached or terraced. Materials used may differ from plot to plot including render and roof tile colours. Detailed plans and specifications are available for inspection for each plot, if you are unsure or for further clarification, please speak to a member of our Sales Team for more information.*

 0333 733 8888

 [sales@ovh.org.uk](mailto:sales@ovh.org.uk)