



CONWAY POINT | BIRKENHEAD

One Vision Housing is delighted to present Conway Point, a stunning development of 46 modern one and two bedroom apartments available through Rent to Buy – rent a new build home at 80% of market value whilst you save for a deposit to buy a home in the future.

The properties occupy a prominent position on Conway St and are ideally located for both Conway Park and Birkenhead Park train stations, with Liverpool city centre being just 10 minutes away by rail. Historic Hamilton Square and Birkenhead Park, which boasts a cricket field, tennis courts, outdoor gym and coffee shop, are both a short walk away.

You'll find a selection of local and national retail shops, including a large Asda, in nearby Birkenhead town centre, and a host of independent eateries in the neighbouring conservation village of Oxtown and Claughton.

A wide variety of leisure and sporting facilities can be found in the surrounding areas of Wallasey, New Brighton and Bidston.

The apartments themselves are designed with modern living in mind and will benefit from gas central heating, contemporary kitchens and bathrooms, intercom security system, and integral bike and bin stores.

Register your interest now
at **sales@ovh.org.uk**

Find us at:

Conway St, Birkenhead, CH41 4AF



0333 733 8888



sales@ovh.org.uk



ovh.org.uk



THE OXTON

- **Ground Floor** – Plots 3, 5, 6, 9, 10 and 11
- **First Floor** – Plots 14, 16, 17, 20, 21 and 22
- **Second Floor** – Plots 26, 28, 29, 32, 33 and 34
- **Third Floor** – Plots 37, 39, 40, 43, 44 and 45

ABOUT THE PROPERTY

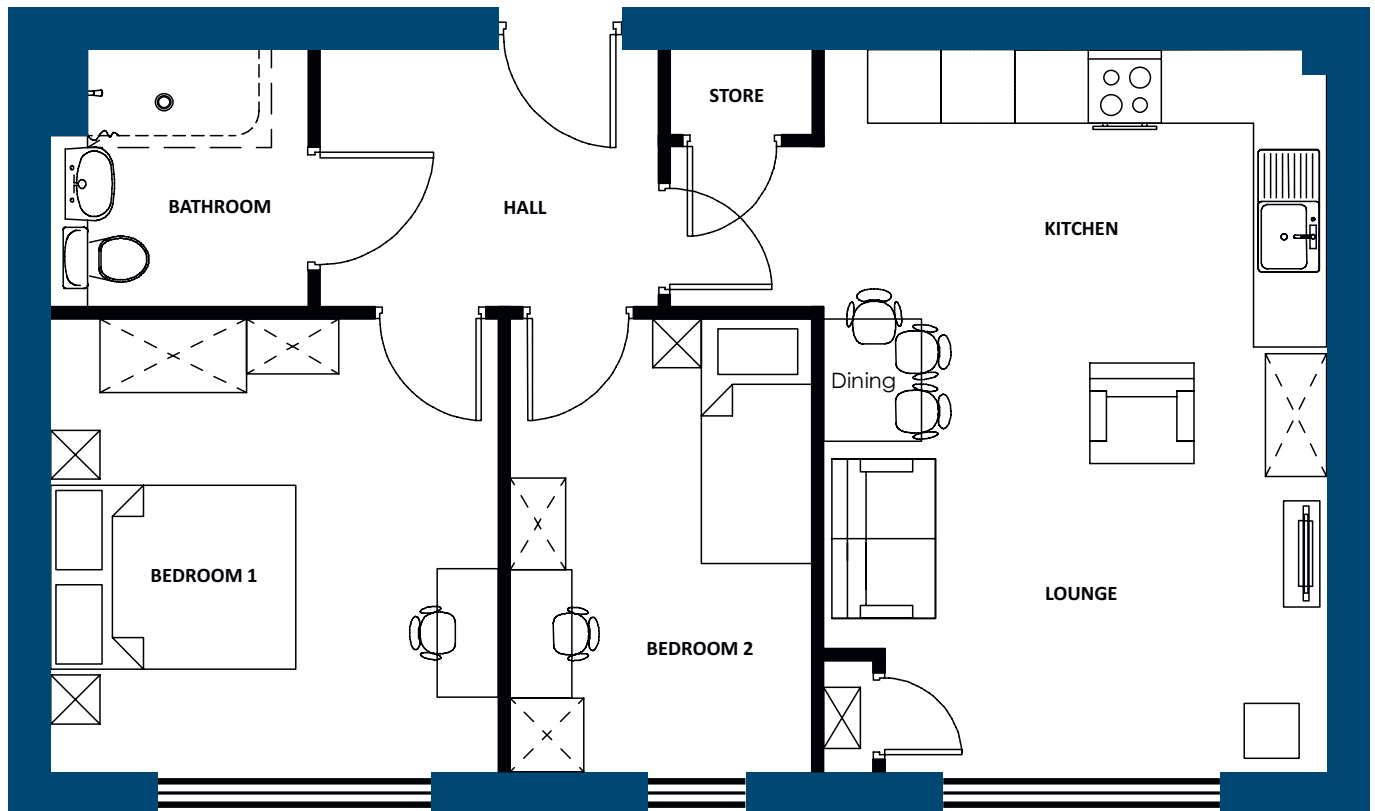
The Oxtan is a modern two bedroom mid or end apartment which enjoys an open plan living/kitchen space, two bedrooms and stylish bathroom.

FEATURES

- Two bedroom apartment (approx. 62m2*)
- Open plan living/kitchen space
- Stylish bathroom
- Mid or end apartment
- Intercom security system

*Top floor specification reduces slightly to approx. 57m2

THE OXTON | FLOOR PLANS



Two bedroom apartment (approx. 62m2*)

All photos, images and computer-generated images in these particulars are for illustrative purposes and general guidance only. They do not constitute a contract, part of contract or warranty. External finishes, street configuration and landscaping may vary from plot to plot. Please check with OVH's Sales Negotiator for further details relating to specific plots. The appliances/white goods provided are a cooker, hob and extractor hood – any other appliances indicated on these plans are to indicate space available. Measurements provided are estimated; to ensure accuracy please undertake your own measurements before ordering any flooring, fixtures, fittings or furniture. Note: Bedroom dimensions taken into wardrobe recess. All wardrobes are subject to site specification. Please see Sales Negotiator for further details.



THE HAMILTON

- **Ground Floor** – Plots 2, 7, 8
- **First Floor** – Plots 13, 18, 19 and 23
- **Second Floor** – Plots 24, 25, 30, 31 and 35
- **Third Floor** – Plots 36, 41, 42 and 46

ABOUT THE PROPERTY

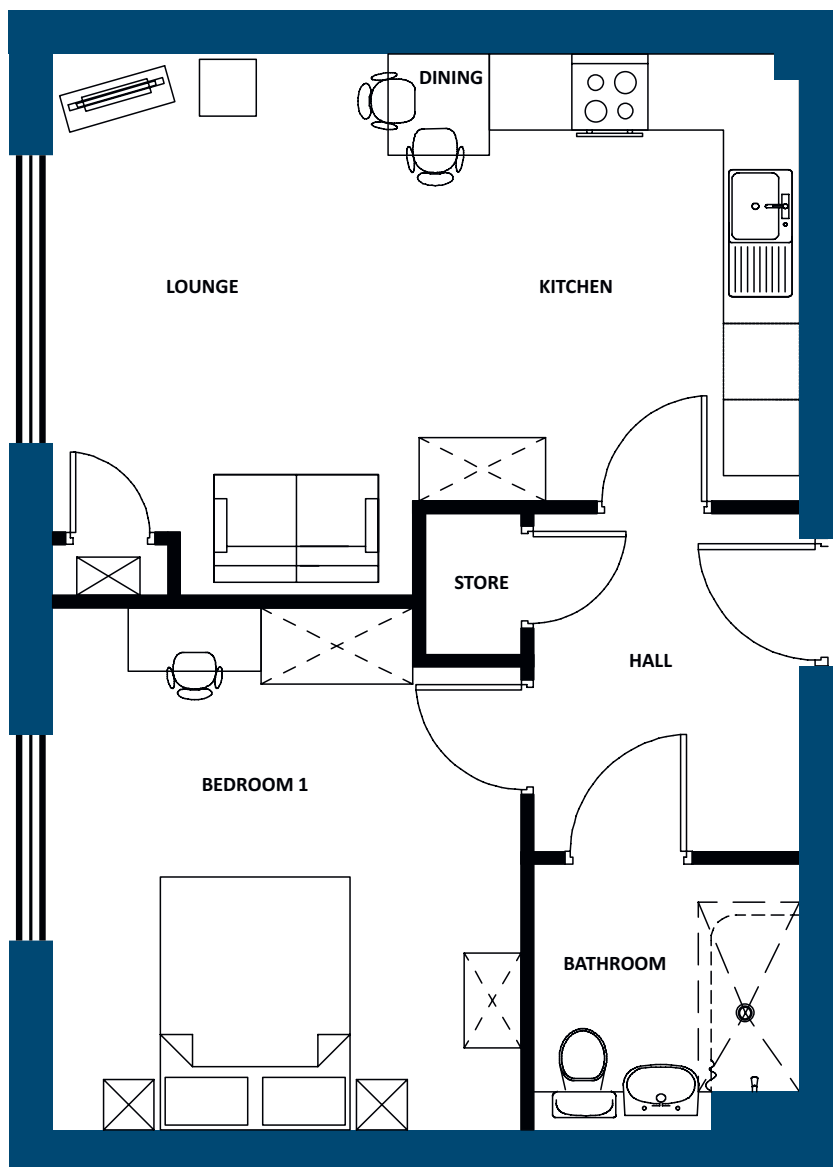
The Hamilton is a one bedroom mid or end apartment benefiting from an entrance hall with store, open plan living/kitchen room, spacious double bedroom and modern bathroom.

FEATURES

- One bedroom apartment (approx. 50m2*)
- Open plan living/kitchen space
- Stylish bathroom
- Mid or end apartment
- Intercom security system

*Top floor specification reduces slightly to approx. 47m2

THE HAMILTON | FLOOR PLANS



One bedroom apartment (approx. 50m²*)

All photos, images and computer-generated images in these particulars are for illustrative purposes and general guidance only. They do not constitute a contract, part of contract or warranty. External finishes, street configuration and landscaping may vary from plot to plot. Please check with OVH's Sales Negotiator for further details relating to specific plots. The appliances/white goods provided are a cooker, hob and extractor hood – any other appliances indicated on these plans are to indicate space available. Measurements provided are estimated; to ensure accuracy please undertake your own measurements before ordering any flooring, fixtures, fittings or furniture. Note: Bedroom dimensions taken into wardrobe recess. All wardrobes are subject to site specification. Please see Sales Negotiator for further details.



THE CLAUGHTON

- **Ground Floor** – Plot 4
- **First Floor** – Plot 15
- **Second Floor** – Plot 27
- **Third Floor** – Plot 38

ABOUT THE PROPERTY

The Cloughton is a spacious two bedroom corner apartment with windows to three elevations, enjoying an open plan living/kitchen space, two double bedrooms and modern bathroom.

FEATURES

- Two bedroom apartment (approx. 70m2*)
- Open plan living/kitchen space
- Stylish bathroom
- Corner apartment
- Intercom security system

*Top floor specification reduces slightly to approx. 47m2

THE CLAUGHTON | FLOOR PLANS



Two bedroom apartment (approx. 70m²*)

All photos, images and computer-generated images in these particulars are for illustrative purposes and general guidance only. They do not constitute a contract, part of contract or warranty. External finishes, street configuration and landscaping may vary from plot to plot. Please check with OVH's Sales Negotiator for further details relating to specific plots. The appliances/white goods provided are a cooker, hob and extractor hood – any other appliances indicated on these plans are to indicate space available. Measurements provided are estimated; to ensure accuracy please undertake your own measurements before ordering any flooring, fixtures, fittings or furniture. Note: Bedroom dimensions taken into wardrobe recess. All wardrobes are subject to site specification. Please see Sales Negotiator for further details.



THE DEVONSHIRE

- **Ground Floor** – Plot 1
- **First Floor** – Plot 12

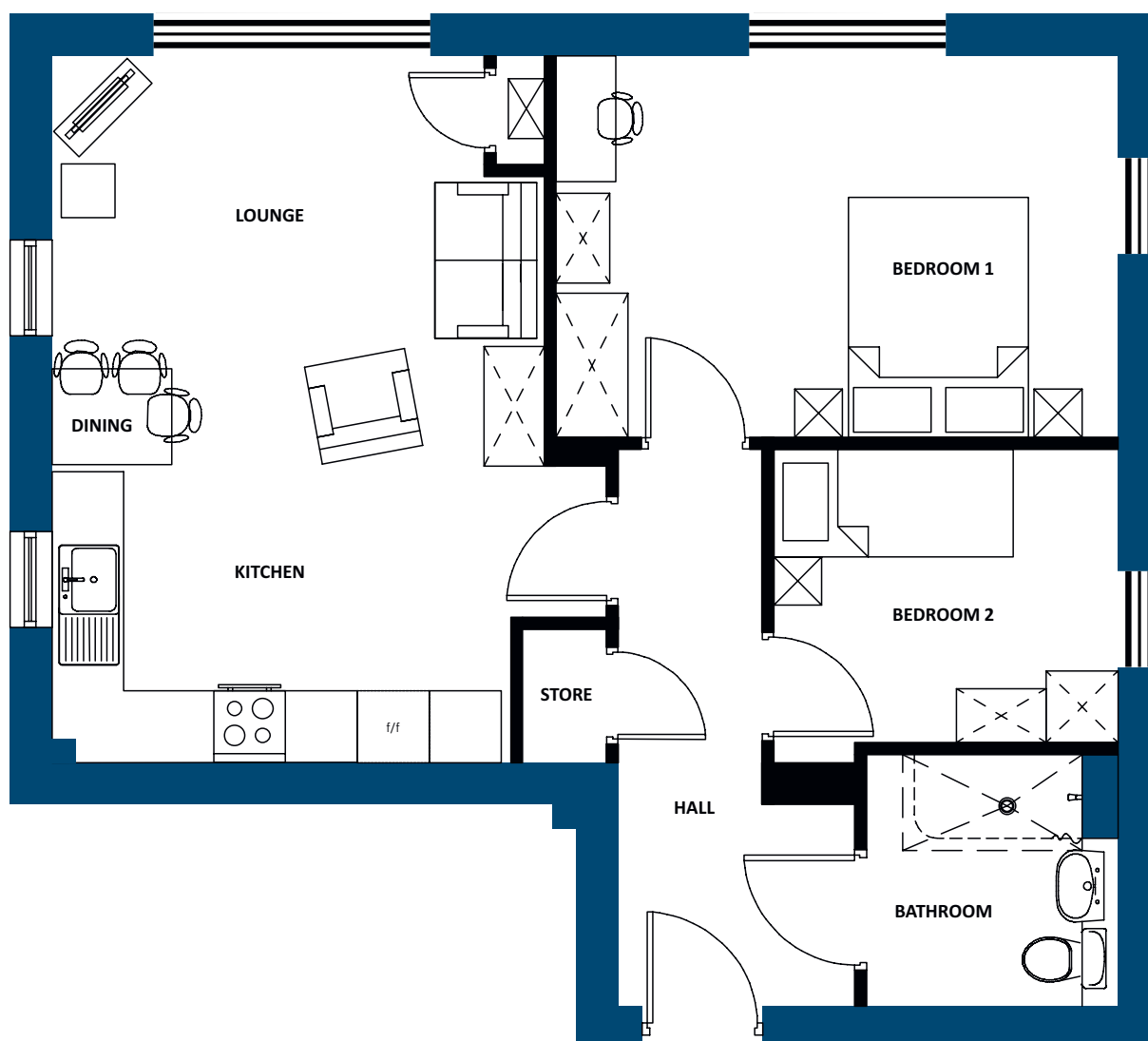
ABOUT THE PROPERTY

The Devonshire is a two bedroom end corner apartment with windows to three sides, boasting a modern living/kitchen area, two bedrooms and stylish bathroom.

FEATURES

- Two bedroom apartment (approx. 61m²)
- Open plan living/kitchen space
- Stylish bathroom
- Corner apartment
- Intercom security system

THE DEVONSHIRE | FLOOR PLANS



Two bedroom apartment (approx. 61m²)

All photos, images and computer-generated images in these particulars are for illustrative purposes and general guidance only. They do not constitute a contract, part of contract or warranty. External finishes, street configuration and landscaping may vary from plot to plot. Please check with OVH's Sales Negotiator for further details relating to specific plots. The appliances/white goods provided are a cooker, hob and extractor hood – any other appliances indicated on these plans are to indicate space available. Measurements provided are estimated; to ensure accuracy please undertake your own measurements before ordering any flooring, fixtures, fittings or furniture. Note: Bedroom dimensions taken into wardrobe recess. All wardrobes are subject to site specification. Please see Sales Negotiator for further details.



THE BIDSTON

- **Second floor** – Plot 24

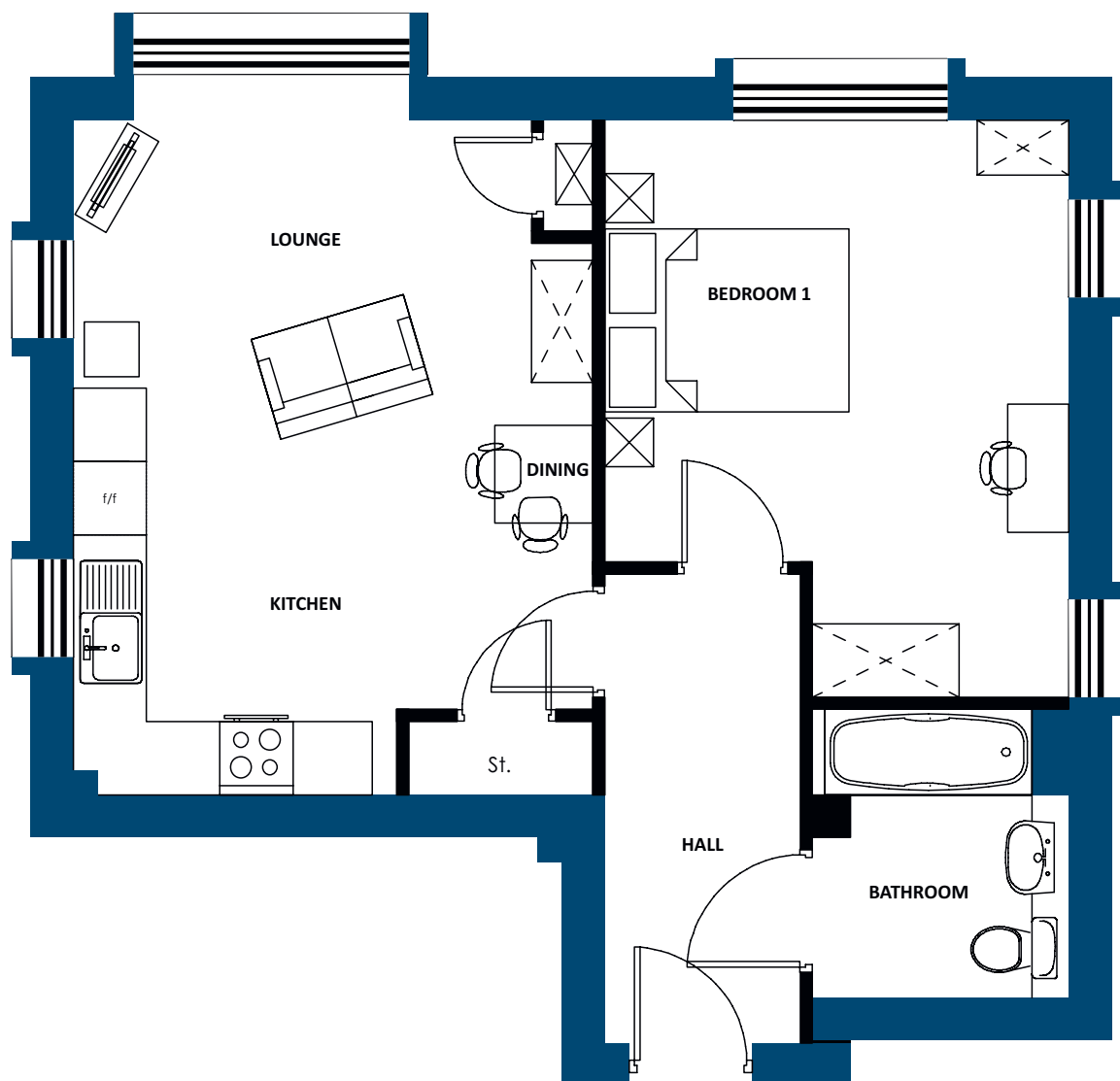
ABOUT THE PROPERTY

The Bidston is a spacious one bedroom end corner apartment with windows to three sides, open plan living/kitchen space, and contemporary bathroom.

FEATURES

- One bedroom apartment (approx. 52m²)
- Open plan living/kitchen space
- Stylish bathroom
- Corner apartment
- Intercom security system

THE BIDSTON | FLOOR PLANS



One bedroom apartment (approx. 52m²)

All photos, images and computer-generated images in these particulars are for illustrative purposes and general guidance only. They do not constitute a contract, part of contract or warranty. External finishes, street configuration and landscaping may vary from plot to plot. Please check with OVH's Sales Negotiator for further details relating to specific plots. The appliances/white goods provided are a cooker, hob and extractor hood – any other appliances indicated on these plans are to indicate space available. Measurements provided are estimated; to ensure accuracy please undertake your own measurements before ordering any flooring, fixtures, fittings or furniture. Note: Bedroom dimensions taken into wardrobe recess. All wardrobes are subject to site specification. Please see Sales Negotiator for further details.