



THE BROOK at Scarisbrick

THE BROOK AT SCARISBRICK, LANCASHIRE

**One Vision Housing
are delighted to
launch an exclusive
collection of just
28 new homes
at The Brook in
Scarisbrick through
Rent to Buy and
Shared Ownership.**

These stunning homes are located in the semi-rural location of Scarisbrick, within easy reach of Southport and just eight miles from the M58 providing excellent access to the motorway network. There are good public transport links with ample bus stops close by and Bescar Lane railway station less than two miles away.



THE DAISY



The Daisy is a lovely two bedroom home, perfect for those looking for their first home or for households looking to downsize to a modern easy to maintain new home.

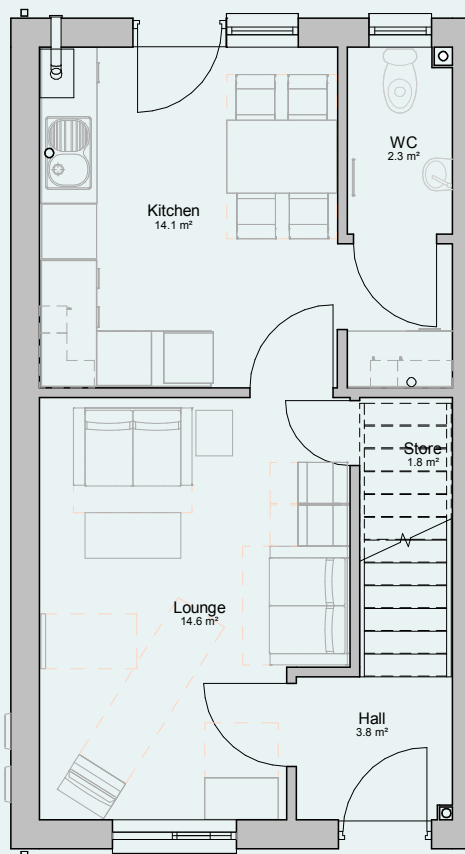
The welcoming entrance hall leads to a spacious living room and the bright open plan kitchen/dining room is located at the rear of the home, with access to the garden. A handy cloakroom completes the ground floor.

On the first floor there are two double bedrooms and a family bathroom.

Packed with lots of extras; such as turfed gardens, fencing, TV aerial and floorcoverings to the kitchen, bathroom and cloakroom, you can start enjoying your new home as soon as you move in.

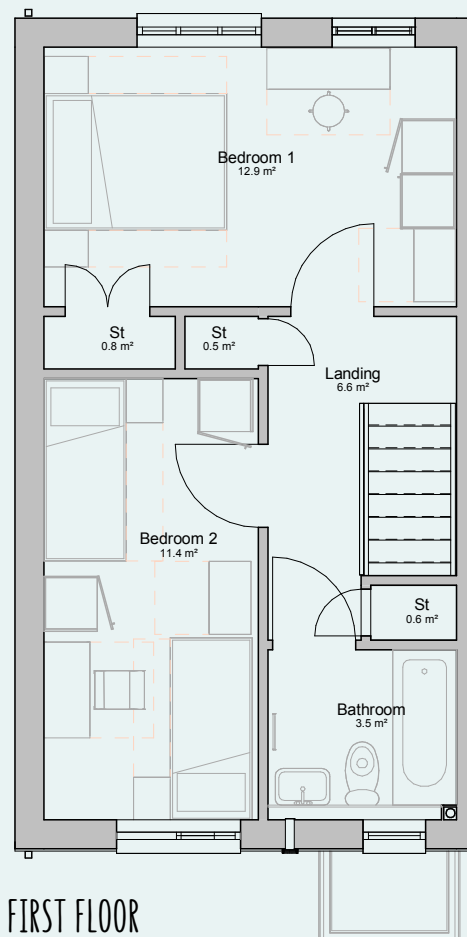
KEY FEATURES:

- New build home; available as a semi-detached, mid mews and end mews house
- Available to rent through Rent to Buy
- Open plan kitchen/dining room
- Integrated hob, oven and cooker hood
- Family bathroom
- Downstairs cloakroom
- Two double bedrooms
- Parking



GROUND FLOOR

Total floor area: 76 m² / 818 sqft



FIRST FLOOR

THE SNOWDROP



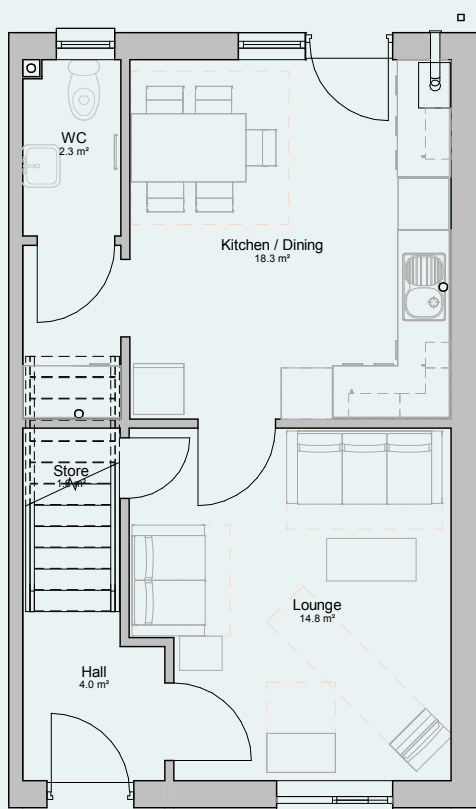
The Snowdrop is a charming three bedroom semi-detached home, perfect for a range of buyers including those looking for their first home, growing families or for households looking to downsize to a modern easy to maintain new home.

The welcoming entrance hall leads to a spacious living room at the front of the property and a bright open plan kitchen/dining room at the rear, with access to the garden.

On the first floor there are two double bedrooms, a single bedroom and the family bathroom. Packed with lots of extras; such as turfed gardens, fencing, TV aerial and floorcoverings to the kitchen, bathroom and cloakroom, you can start enjoying your new home as soon as you move in.

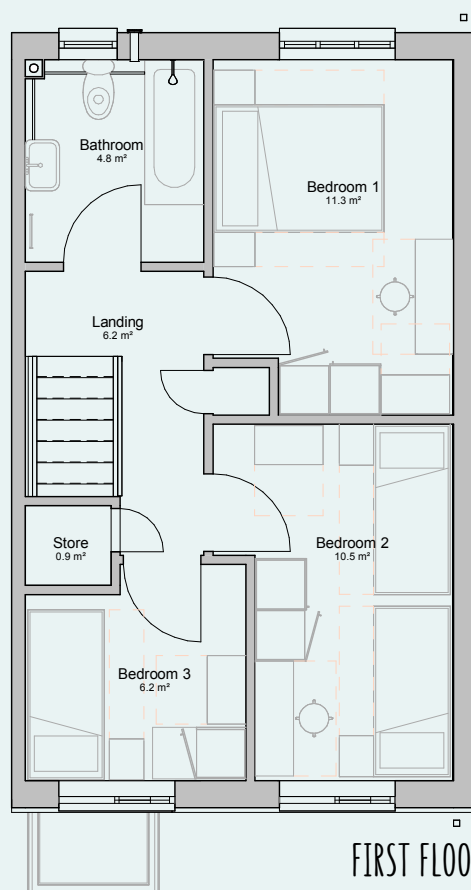
KEY FEATURES:

- New build semi-detached home
- Available to rent through Rent to Buy
- Open plan kitchen/dining room
- Integrated hob, oven and cooker hood
- Downstairs cloakroom
- Two double bedrooms plus a single bedroom
- Parking



GROUND FLOOR

Total floor area: 83 m² / 893 sqft



FIRST FLOOR

THE BLUEBELL



THE BROOK
at Scarisbrick

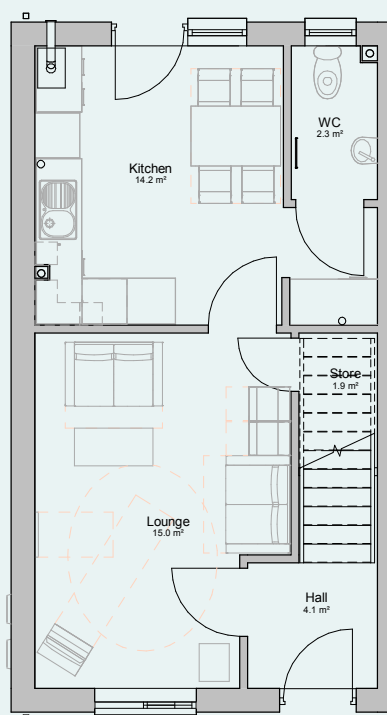
The Bluebell is a generous three bedroom town house, perfect for growing families looking for an easy to maintain new home.

This home is laid out over three floors, with a spacious living room and bright open plan kitchen/dining room on the ground floor, two good sized bedrooms and a family bathroom on the first floor and a stunning master bedroom with en-suite bathroom and storage/dressing area on the second floor.

Packed with lots of extras; such as turfed gardens, fencing, TV aerial and floorcoverings to the kitchen, bathroom and cloakroom, you can start enjoying your new home as soon as you move in.

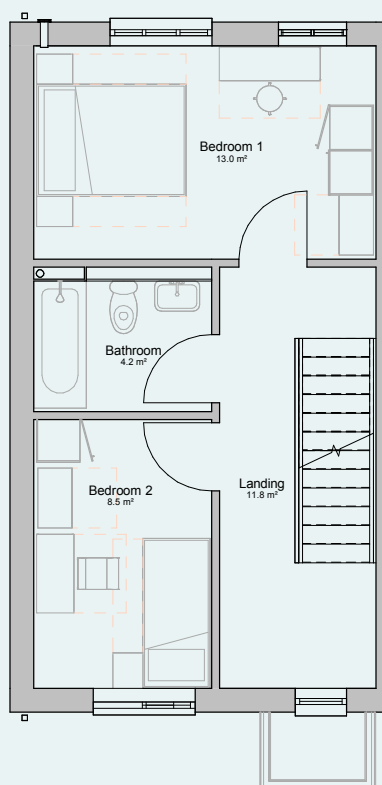
KEY FEATURES:

- New build town house
- Available to buy through Shared Ownership: no ground rent payable and freehold transferred on 100% purchase
- Open plan kitchen/dining room
- Integrated hob, oven and cooker hood
- Downstairs cloakroom
- Two double bedrooms plus a single bedroom
- Parking

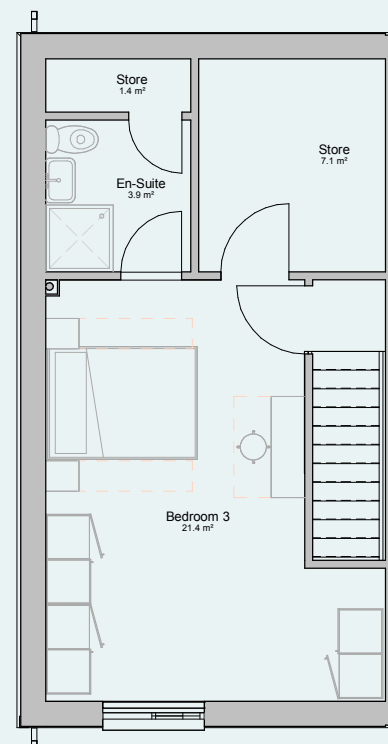


GROUND FLOOR

Total floor area: 88 m² / 947 sqft



FIRST FLOOR



SECOND FLOOR