

# Blackbird Grange



**Rent  
to Buy**

## The Leighton

The Leighton is a lovely two bedroom home, perfect for a range of households including couples, small families or those looking to downsize to a modern easy to maintain new home.

Packed with lots of extras, such as turfed gardens, fencing, integrated appliances and floor-coverings to the kitchen, bathroom and cloakroom, you can start enjoying your new home as soon as you move in.

With an open plan living/dining room and a stunning kitchen on the ground floor, this home is designed for modern living. Upstairs, there are two double bedrooms (one with an en-suite) and a family bathroom.



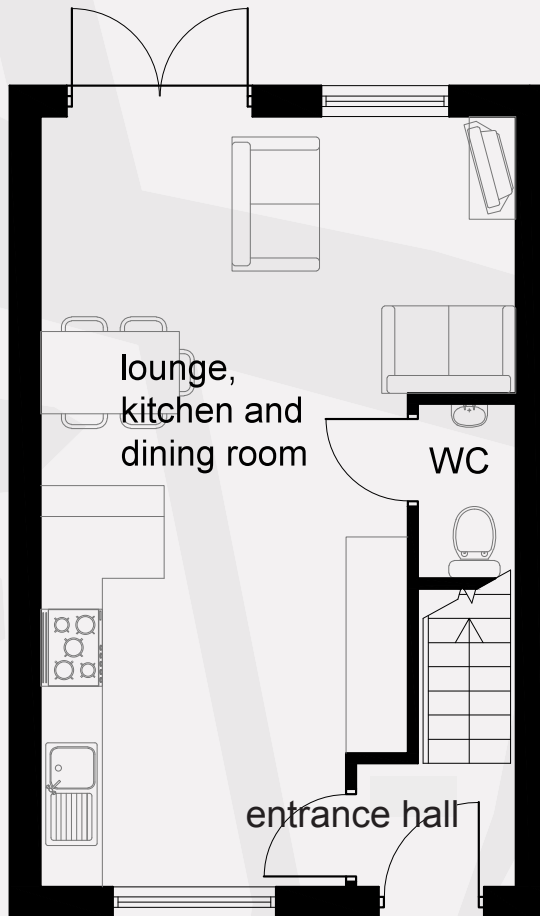
### Key Features:

- Two bedroom home: semi-detached, mid or end mews house
- 745 SQFT
- Available through 'Rent to Buy': rent now at a reduced rent and buy when you can afford to
- Freehold transferred on 100% sale/No Ground Rent
- Open plan ground floor, kitchen-dining-living room
- Stunning kitchen with integrated oven, hob and cooker hood
- Downstairs cloakroom
- Two double bedrooms
- Two bathrooms
- Private driveway

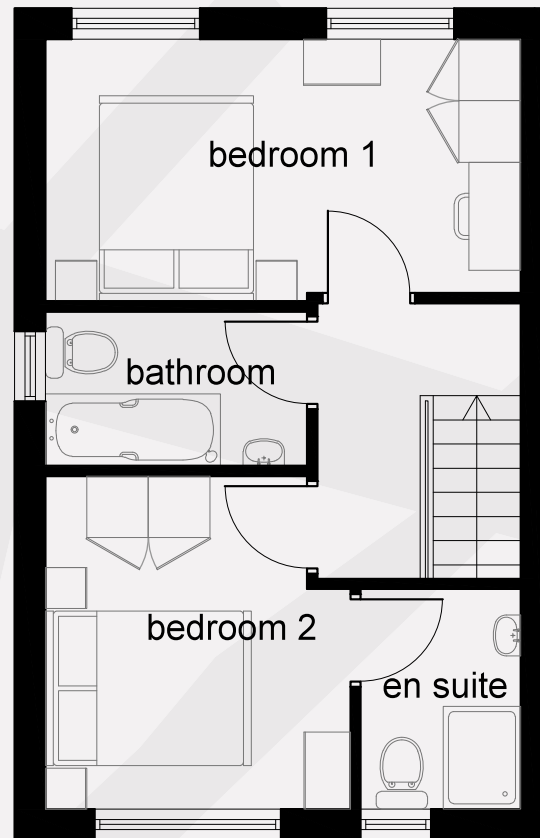
# The Leighton – Floorplan

2 bedroom house

Total Area: 69.2m<sup>2</sup> / 745ft<sup>2</sup>



Ground floor



First floor

## The Leighton Home Specification

### Bathroom

- Heated towel rail
- Porcelanosa wall tiles
- Chrome taps

### Kitchen

- Glass splashback
- Cooker, hob and hood

### Flooring

- Wet area flooring

### Plumbing and heating

- Gas boiler  
– central heating

### External

- Patio
- Front and rear garden
- Private driveway

All photos, images and computer generated images in these particulars are for illustrative purposes and general guidance only. They do not constitute a contract, part of contract or warranty. External finishes, street configuration and landscaping may vary from plot to plot. Please check with OVH's sales advisor for further details relating to specific plots. Measurements provided are estimated; to ensure accuracy please undertake your own measurements before ordering any flooring, fixtures, fittings or furniture. Note: Bedroom dimensions taken into wardrobe recess.

