



POPPY FIELDS MAGHULL



One Vision Housing are delighted to offer a collection of three bedroom homes for sale through our 'Shared Ownership' (part buy-part rent) option on the popular Poppy Fields development in Maghull.

Shared Ownership is perfect for home buyers with a small deposit as you can buy a share of a new home, pay a low rent on the remaining share and buy more when you afford to, eventually owning all of your home.

Situated just ten miles from Liverpool, Poppy Fields offers stylish homes that are conveniently located for the motorway network via the M57 and M58, giving easy access to Liverpool, Warrington and Manchester.

The newly-built Maghull North railway station can be found at the entrance to the development, providing services between Liverpool and Ormskirk.

Poppyfields is well served by local amenities including Central Square Shopping Centre, supermarkets and several primary and secondary schools including Summerhill Primary, Northway Primary, Deyes High School and Maricourt Catholic High School.

Available Plots	Style	Size	Type
327	Souter	3 bedroom	Three storey end terrace house
328	Souter	3 bedroom	Three storey mid terrace house
329	Souter	3 bedroom	Three storey mid terrace house
330	Souter	3 bedroom	Three storey end terrace house

Here to help

If you'd like more information about Shared Ownership with One Vision Housing, please visit our website or contact a member of our team:



0333 733 8888



sales@ovh.org.uk



ovh.org.uk

THE SOUTER | THREE BEDROOM HOUSE



All photos, images and computer generated images in these particulars are for illustrative purposes and general guidance only. They do not constitute a contract, part of contract or warranty. External finishes, street configuration and landscaping may vary from plot to plot. Please check with OVH's sales advisor for further details relating to specific plots. Measurements provided are estimated; to ensure accuracy please undertake your own measurements before ordering any flooring, fixtures, fittings or furniture.

About the house

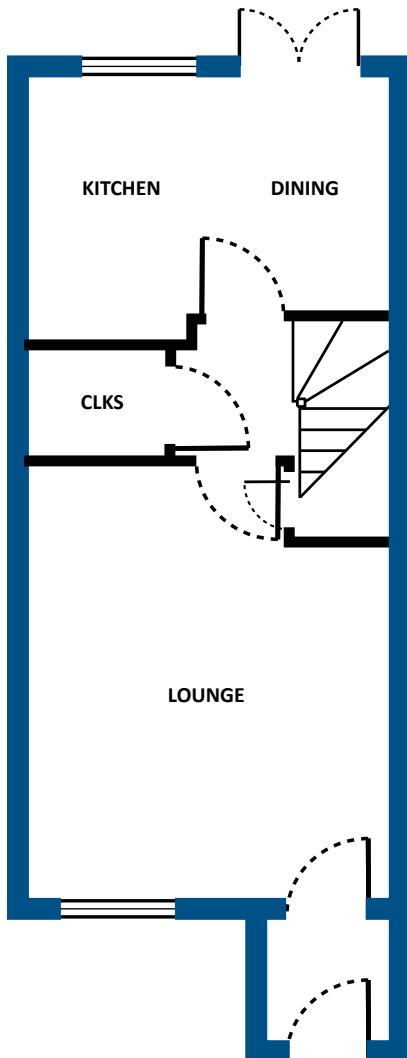
The Souther is an attractive three bedroom home with accommodation laid out over three floors. On the ground floor there is an open plan kitchen/diner with French doors leading to the rear garden, a separate lounge and downstairs cloakroom. The first floor has two double bedrooms alongside a family bathroom, with stairs leading up to the second floor featuring an impressive master bedroom with en-suite.

Features

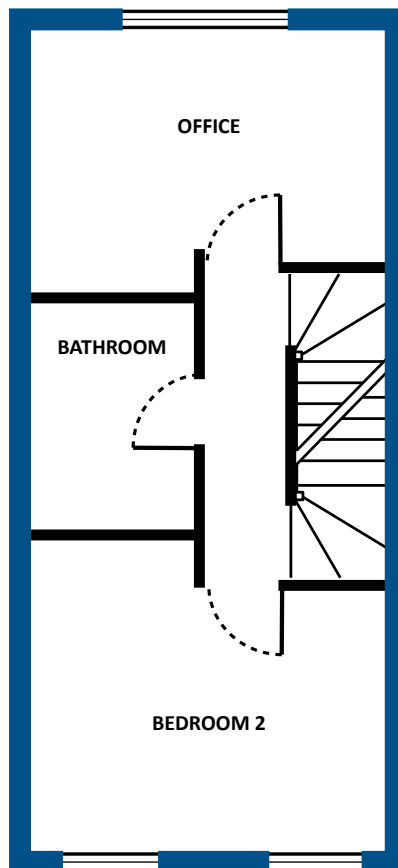
- Available through shared ownership with freehold transferred once 100% is owned
- Three bedroom semi or end/mid terraced house (approx. 919 SQFT)
- Stylish kitchen with integrated oven/hob/extractor, fridge freezer and dishwasher
- Vinyl floorcovering to kitchen, bathrooms and cloakroom
- Private rear garden
- Off road parking

THE SOUTER | FLOOR PLANS

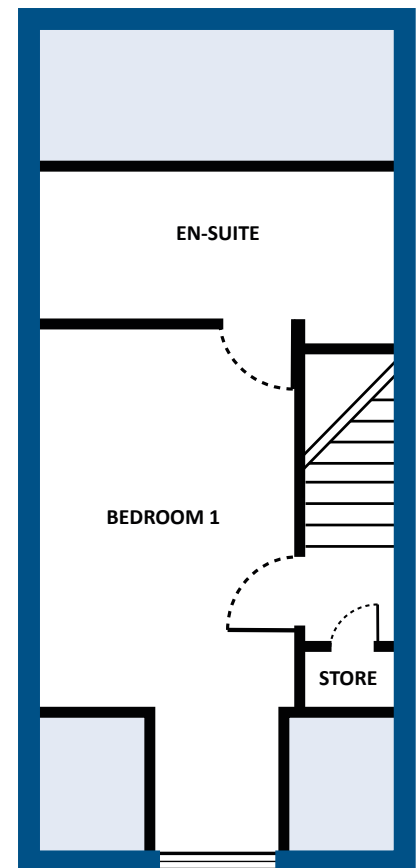
Ground floor



First floor



Second floor



Room sizes

Lounge: 14.9" x 11.10"

Kitchen/dining: 11.10" x 8.11"

Bedroom 2: 12" x 10.10"

Bedroom 3: 11.10" x 7.9"

Bathroom: 7.6" x 5.7"

Bedroom 1: 17.2" x 8.6"

En-suite: 11.10" x 4.8"

All photos, images and computer-generated images in these particulars are for illustrative purposes and general guidance only. They do not constitute a contract, part of contract or warranty. External finishes, street configuration and landscaping may vary from plot to plot. Please check with OVH's Sales Negotiator for further details relating to specific plots. The appliances/white goods provided are a cooker, hob and extractor hood – any other appliances indicated on these plans are to indicate space available. Measurements provided are estimated; to ensure accuracy please undertake your own measurements before ordering any flooring, fixtures, fittings or furniture.

Note: Bedroom dimensions taken into wardrobe recess. All wardrobes are subject to site specification. Please see Sales Negotiator for further details.

THE HANBURY | THREE BEDROOM HOUSE



All photos, images and computer generated images in these particulars are for illustrative purposes and general guidance only. They do not constitute a contract, part of contract or warranty. External finishes, street configuration and landscaping may vary from plot to plot. Please check with OVH's sales advisor for further details relating to specific plots. Measurements provided are estimated; to ensure accuracy please undertake your own measurements before ordering any flooring, fixtures, fittings or furniture.

About the house

The Hanbury is a lovely three bedroom family home. On the ground floor there is an open plan kitchen/ diner with French doors leading into the rear garden a spacious living room and a handy cloakroom. Upstairs there is a master bedroom with en-suite, two further bedrooms and a family bathroom.

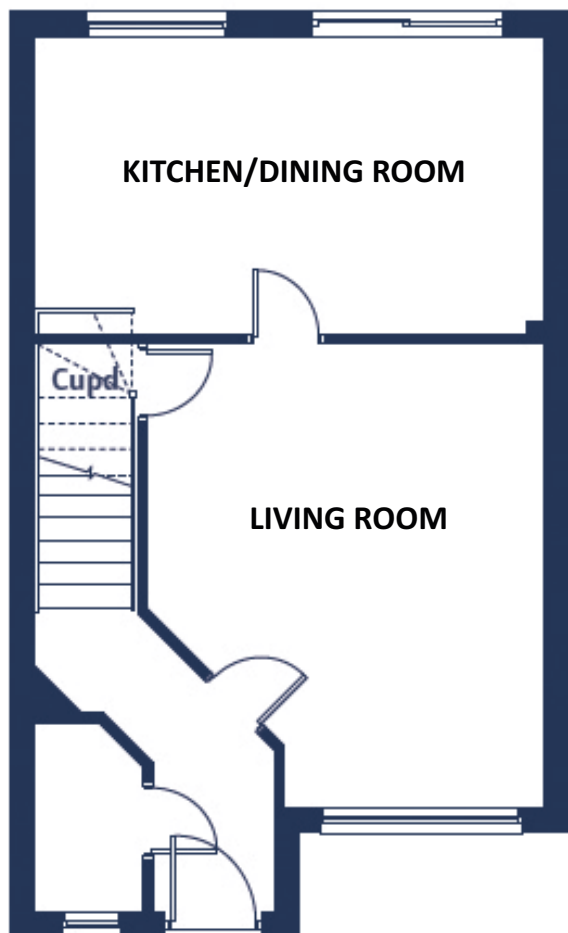
Availability: From Spring 2022

Features

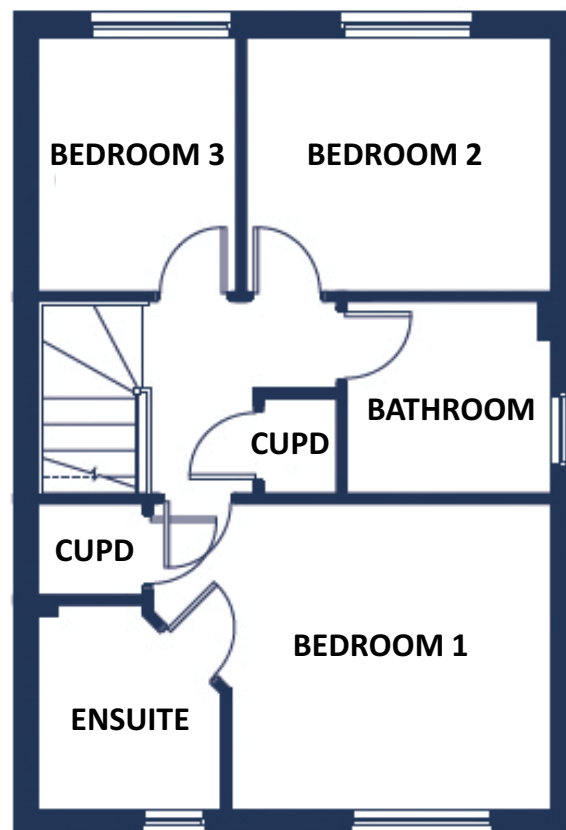
- Available through shared ownership with freehold transferred once 100% is owned
- 3 bedroom semi-detached house (approx. 761 SQFT)
- Stylish kitchen with integrated oven/hob/ extractor, fridge freezer and dishwasher
- Vinyl floorcovering to kitchen, bathrooms and cloakroom
- Private rear garden
- Off road parking

THE HANBURY | FLOOR PLANS

Ground floor



First floor



Room sizes

Lounge: 14.3" x 12.1"

Kitchen/dining: 15.4" x 8.10"

Bedroom 1: 12" x 9.6"

Bedroom 2: 9.3" x 7.7"

Bedroom 3: 7.7" x 5.10"

All photos, images and computer-generated images in these particulars are for illustrative purposes and general guidance only. They do not constitute a contract, part of contract or warranty. External finishes, street configuration and landscaping may vary from plot to plot. Please check with OVH's Sales Negotiator for further details relating to specific plots. The appliances/white goods provided are a cooker, hob and extractor hood – any other appliances indicated on these plans are to indicate space available. Measurements provided are estimated; to ensure accuracy please undertake your own measurements before ordering any flooring, fixtures, fittings or furniture.

Note: Bedroom dimensions taken into wardrobe recess. All wardrobes are subject to site specification. Please see Sales Negotiator for further details.